

Laboratory for optical sensors for astronomy

FZU CAS

Asen Christov

23.6.2022



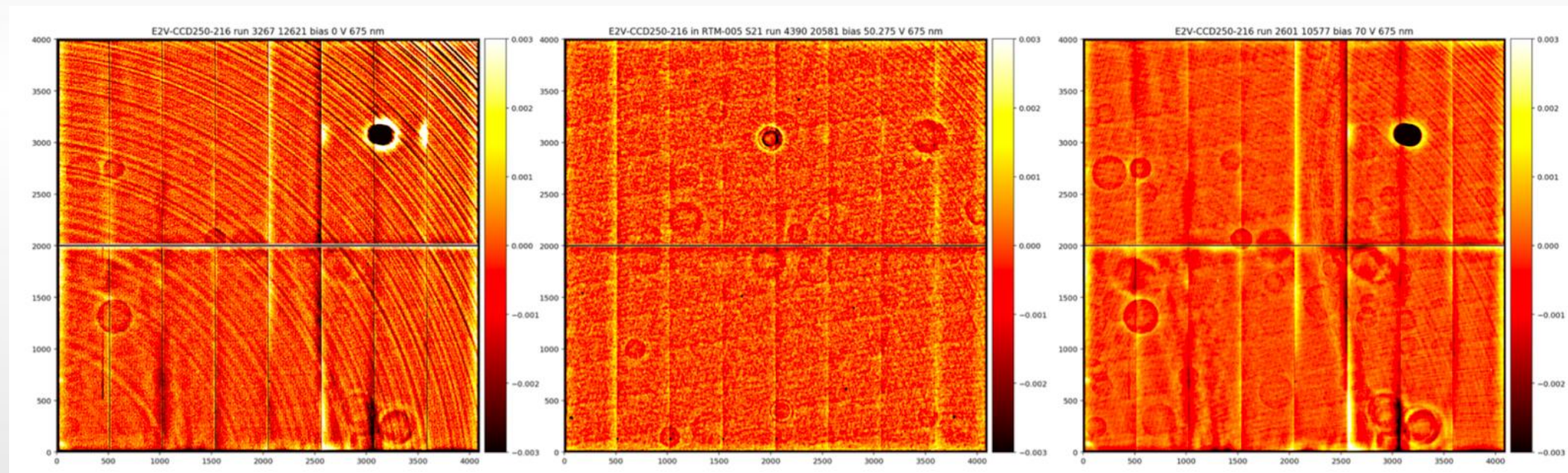
EUROPEAN UNION
European Structural and Investment Funds
Operational Programme Research,
Development and Education



- Established 2016
- First project: testing CCDs for LSST
- Many more projects since

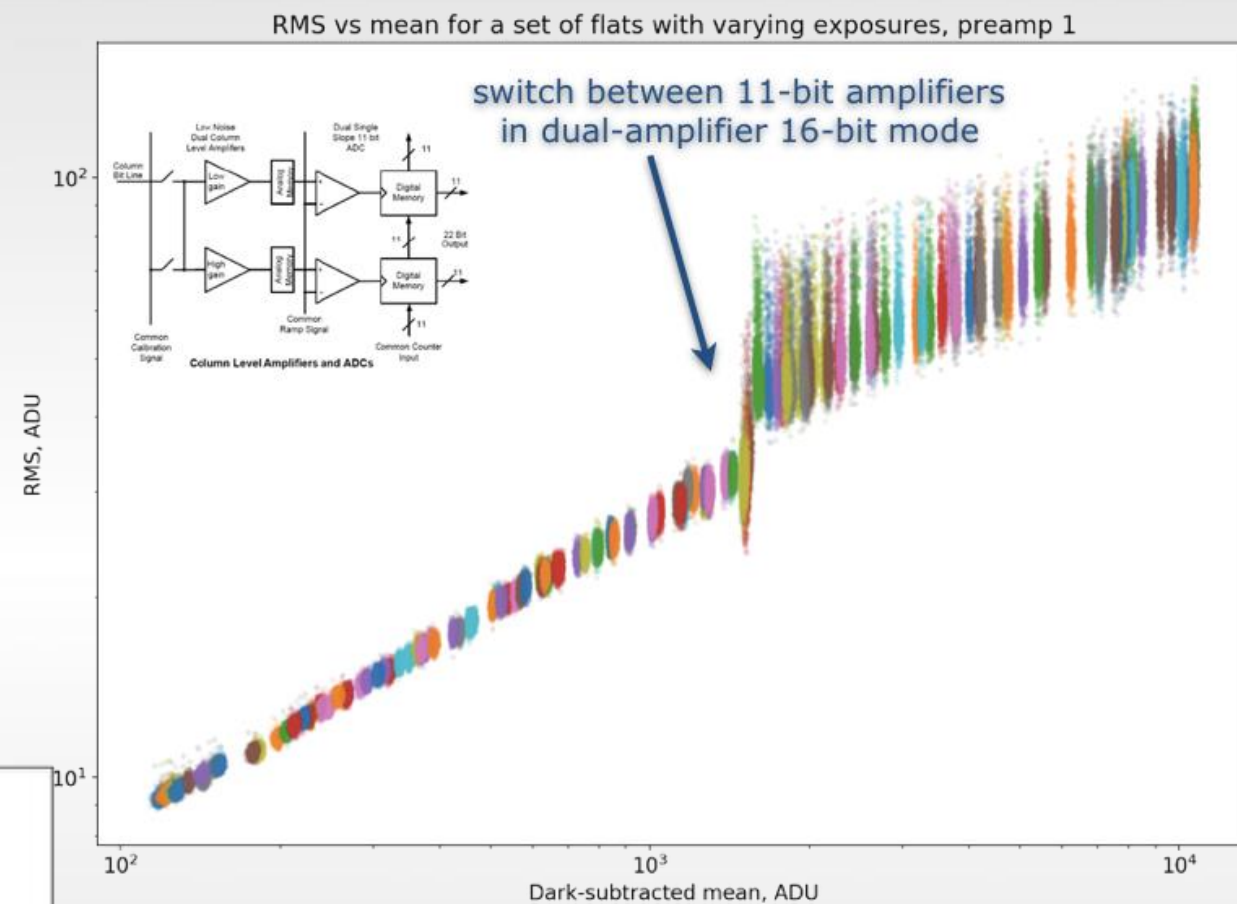
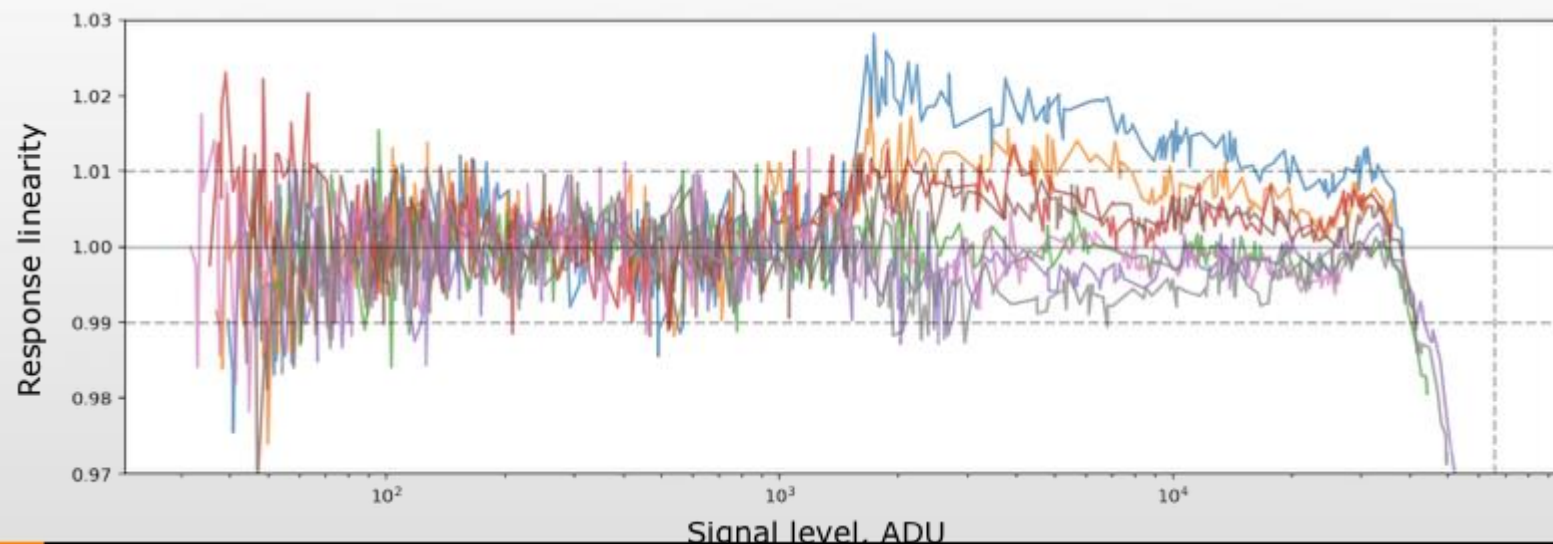


- Detailed study of a *tree rings* - circular periodic electron displacement effect
 - caused by silicon wafer manufacturing process
 - in all production LSST sensors
 - investigation of their amplitudes and spatial periods, as well as effects of back bias voltage and wavelength on their strength, and their influence on cosmological observables.



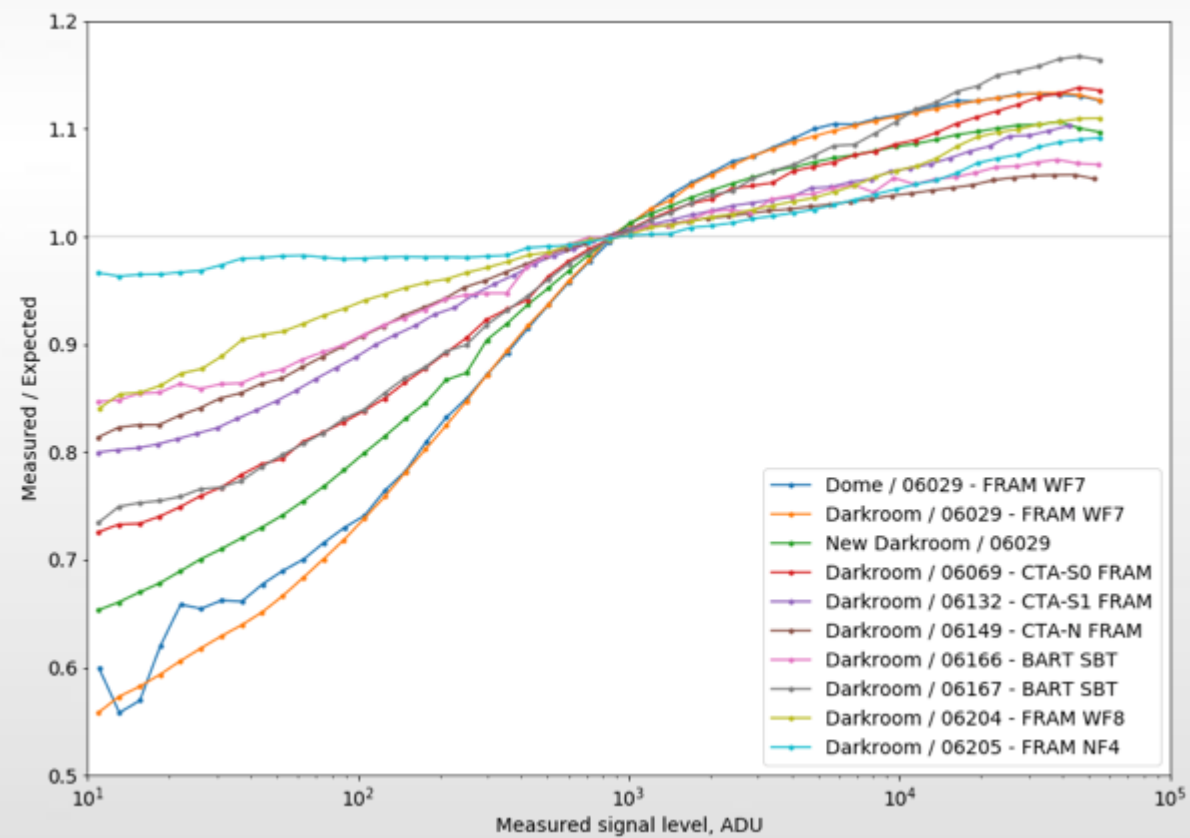
Testing CMOS cameras

Andor Marana CMOS

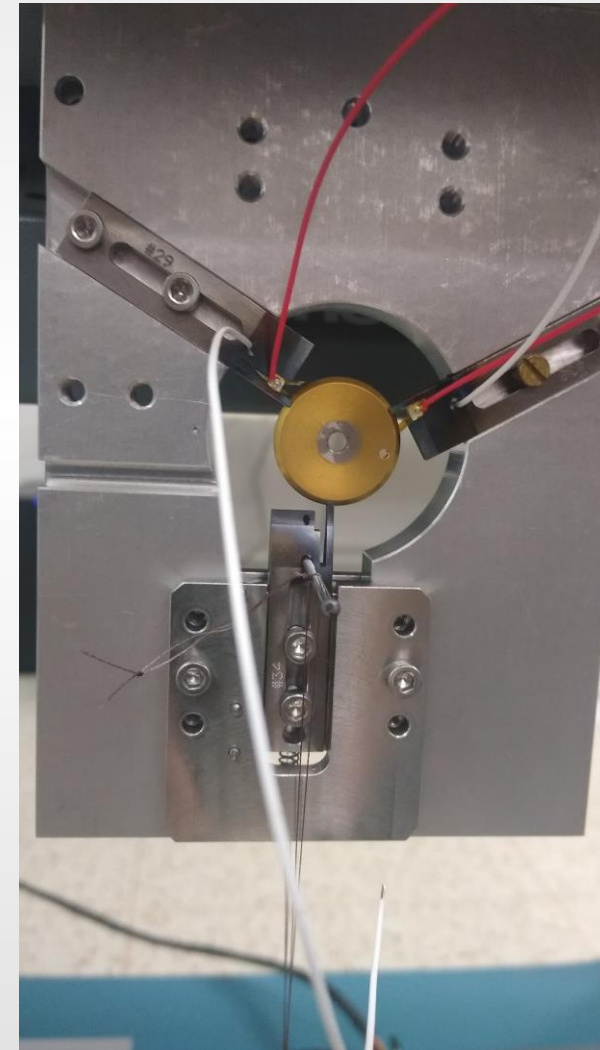
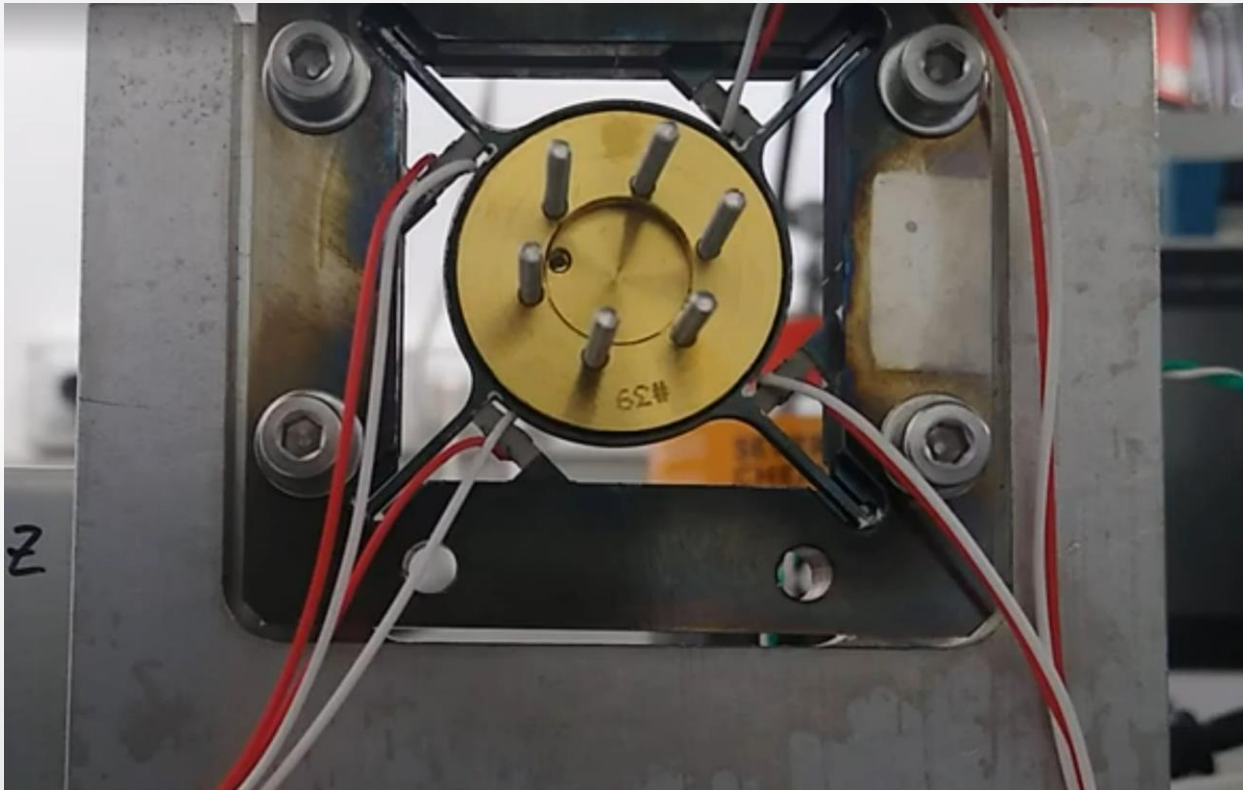


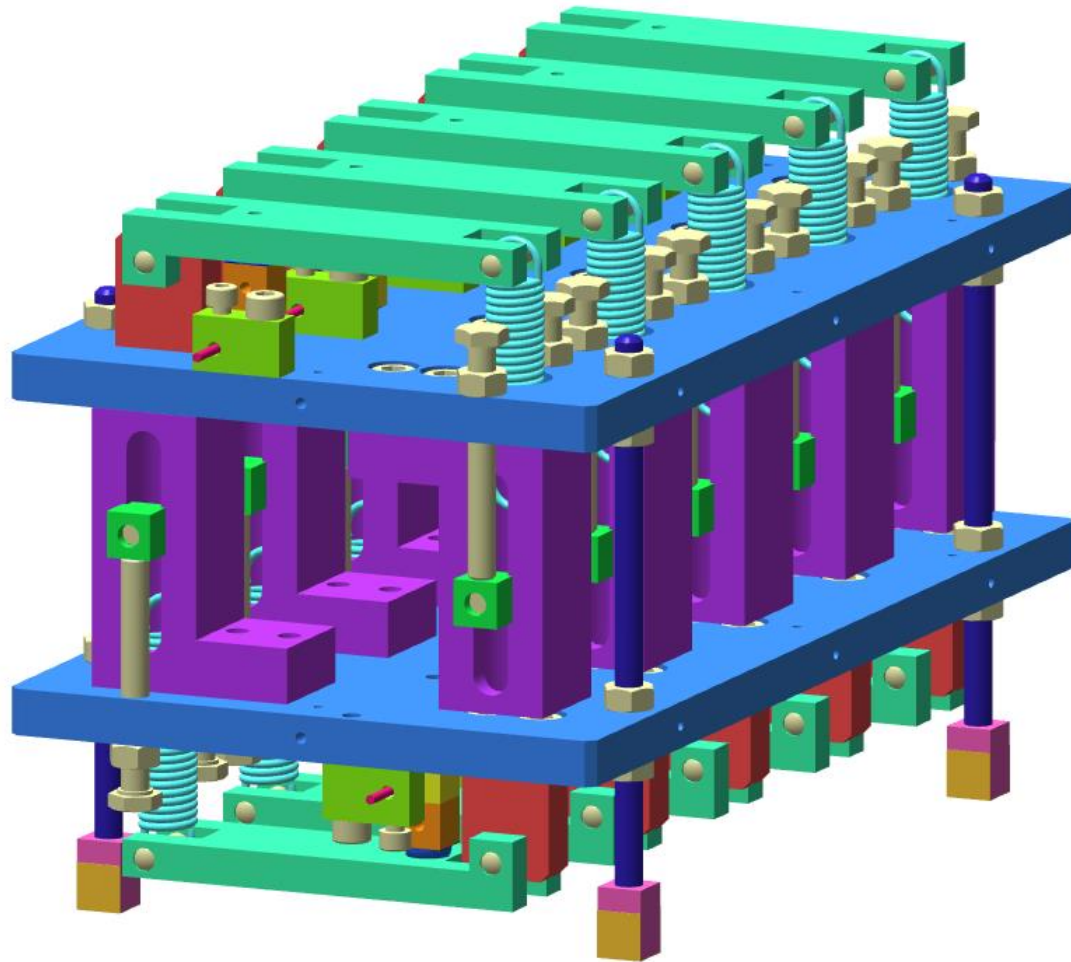


Moravian Instruments C4 Series
CMOS Cameras



Slip-stick driven mechanism for laser switching





Caibration of the SiPM camera on SST1M Cherenkov telescopes



- Coldweld teststand for LISA

- Laboratory equipped for development and testing of optical and optomechanical devices for telescopes and space
- Cryo chamber for vacuum and temperature tests
- Various light sources (monochromator, lasers,...) and calibrated sensors
- Optical equipment, optical table
- Electronics test equipment