

Building Czech Expertise in High-Resolution UV Spectroscopy for Future Space Missions

Tereza Jerabkova
Masaryk University, CZ

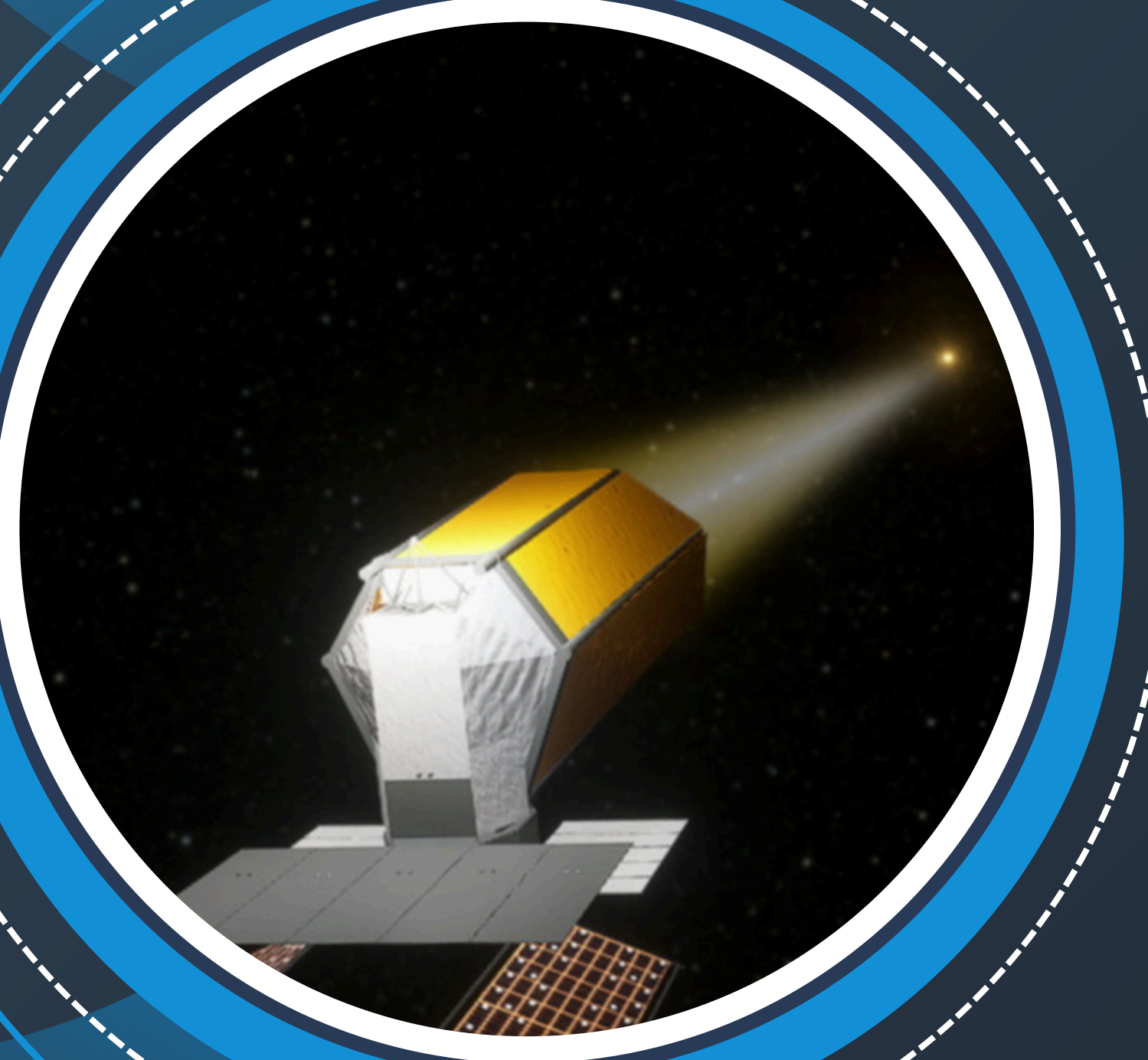
& the PRODEX IDEAS team
FOCUS



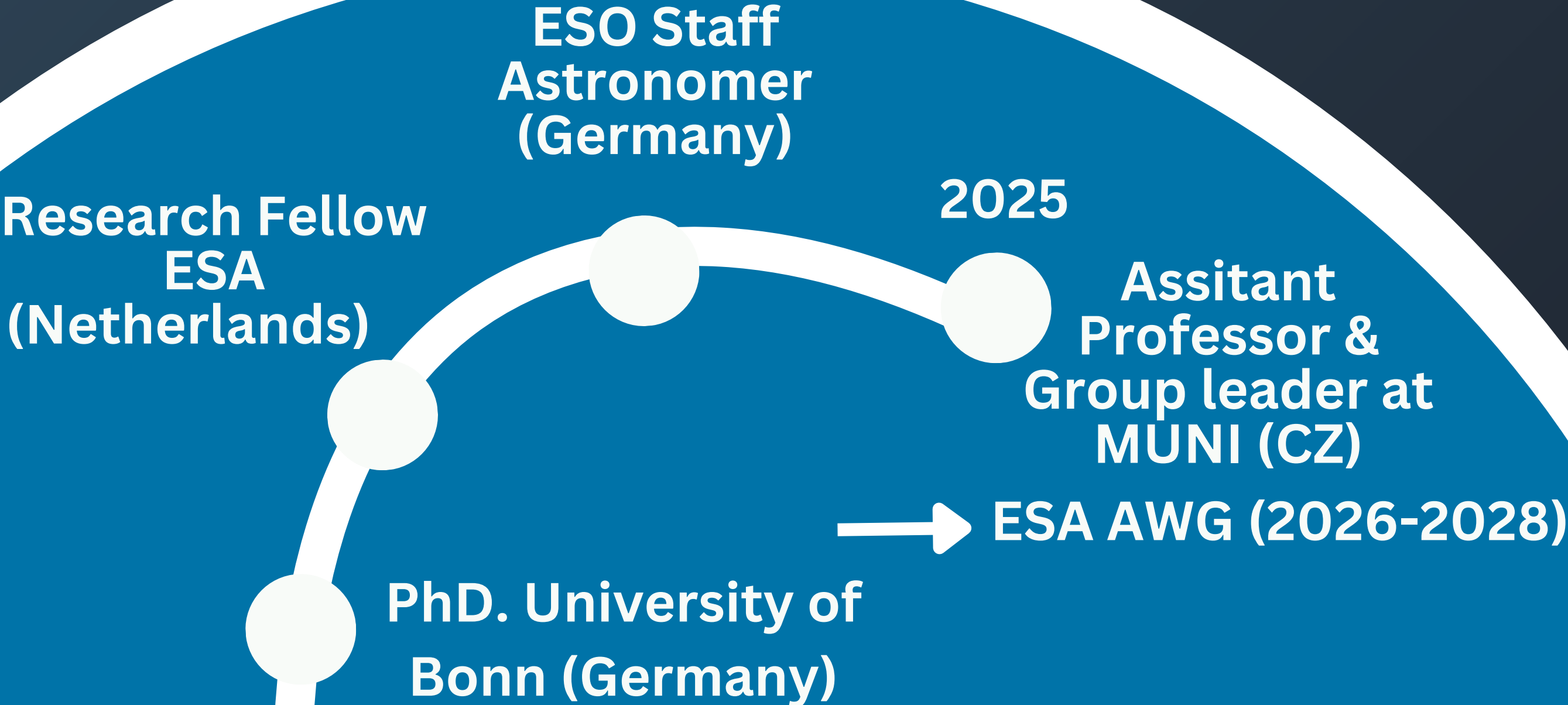
Pollux

tereza.jerabkova@sci.muni.cz

MUNI



New in CZ

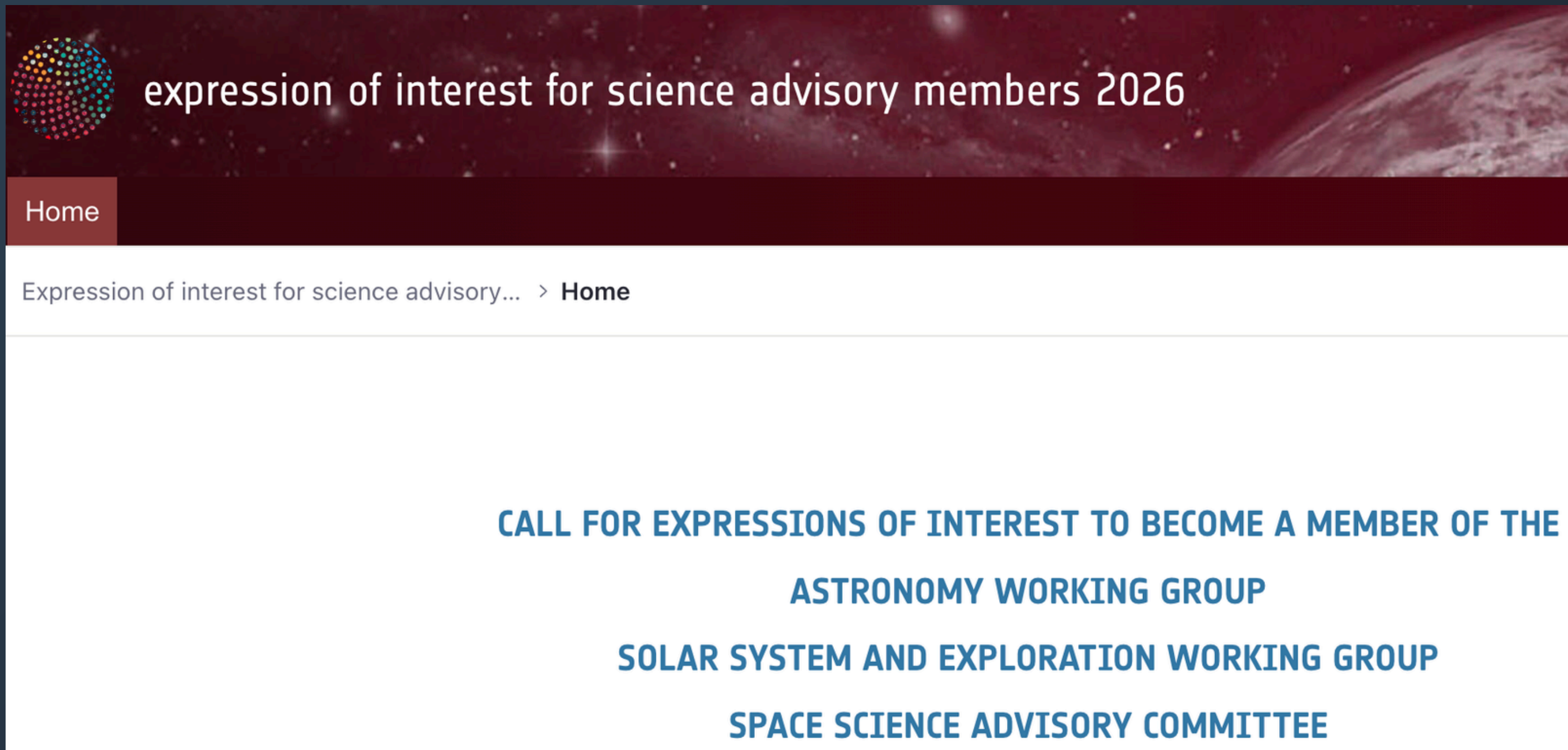


Member of ESA AWG (Astronomy Working Group)

ESA's Science Advisory structure

AWG, SSEWG → SSAC → ESA Director of Science → SPC

we advice to ESA on various matter, e.g. recently the M7 selection



The screenshot shows a website page with a dark red header featuring a colorful dot pattern on the left and a space-themed background on the right. The main content area is white and contains the following text:

Home

Expression of interest for science advisory... > Home

**CALL FOR EXPRESSIONS OF INTEREST TO BECOME A MEMBER OF THE
ASTRONOMY WORKING GROUP
SOLAR SYSTEM AND EXPLORATION WORKING GROUP
SPACE SCIENCE ADVISORY COMMITTEE**

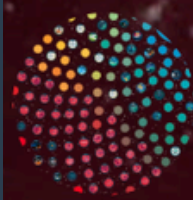
M U N I

Member of ESA AWG (Astronomy Working Group)

ESA's Science Advisory structure

AWG, SSEWG → SSAC → ESA Director of Science → SPC

we advice to ESA on various matter, e.g. recently the M7 selection



directorate of science town hall meeting

[Home](#)

[Registration](#)

[Code of Conduct](#)

[Data Privacy Notice](#)

[Previous Townhalls](#)

DIRECTOR OF SCIENCE TOWN HALL MEETING

A VIRTUAL MEETING TO BE HELD ON WEDNESDAY 24 JUNE 2026, FROM 14:00 CEST

M U N I

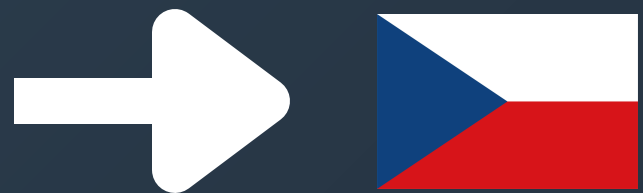
Czech National Space Plan (2026–2032):

“The Czech Republic aims to be an active and internationally recognised player in space activities, capable of fully exploiting their potential for the development of the economy and society.”

“A key objective is the strengthening of the role of Czech entities in international space projects, including their involvement in higher-value activities and the development of cooperation between research organisations and industry.”

From participation to ownership of key space capabilities.

We need: Ministry-supported development of i) key needed competencies (industry) and ii) coordinated scientific leadership (academia)



- i) on full packages (instrument leads), F mission lead**
- ii) leadership role in science consortium**

PRODEX PROGRAMME - ENHANCING SCIENCE INSTRUMENTATION CAPABILITIES IN PRODEX PARTICIPATING STATES. Call for ideas.

The European Space Agency invites the economic operators of the PRODEX Participating States to submit outline proposals in response to the 2025 "Call for ideas for enhancing science instrumentation capabilities in the PRODEX Participating States"



Director of Science - Carole Mundell

FOCUS

**Fabry–Pérot Optics for Calibration in the UV Spectrum -
*High-Resolution Etalon Technology for Future Space Missions***

the FOCUS team: CZ, AT, BE

Calibration for high-resolution spectroscopy is currently a bottleneck (expected NASA call for HWO)



From participation to ownership of key space capabilities.

CLASSIFIED – For ESA Official Use Only



FOCUS

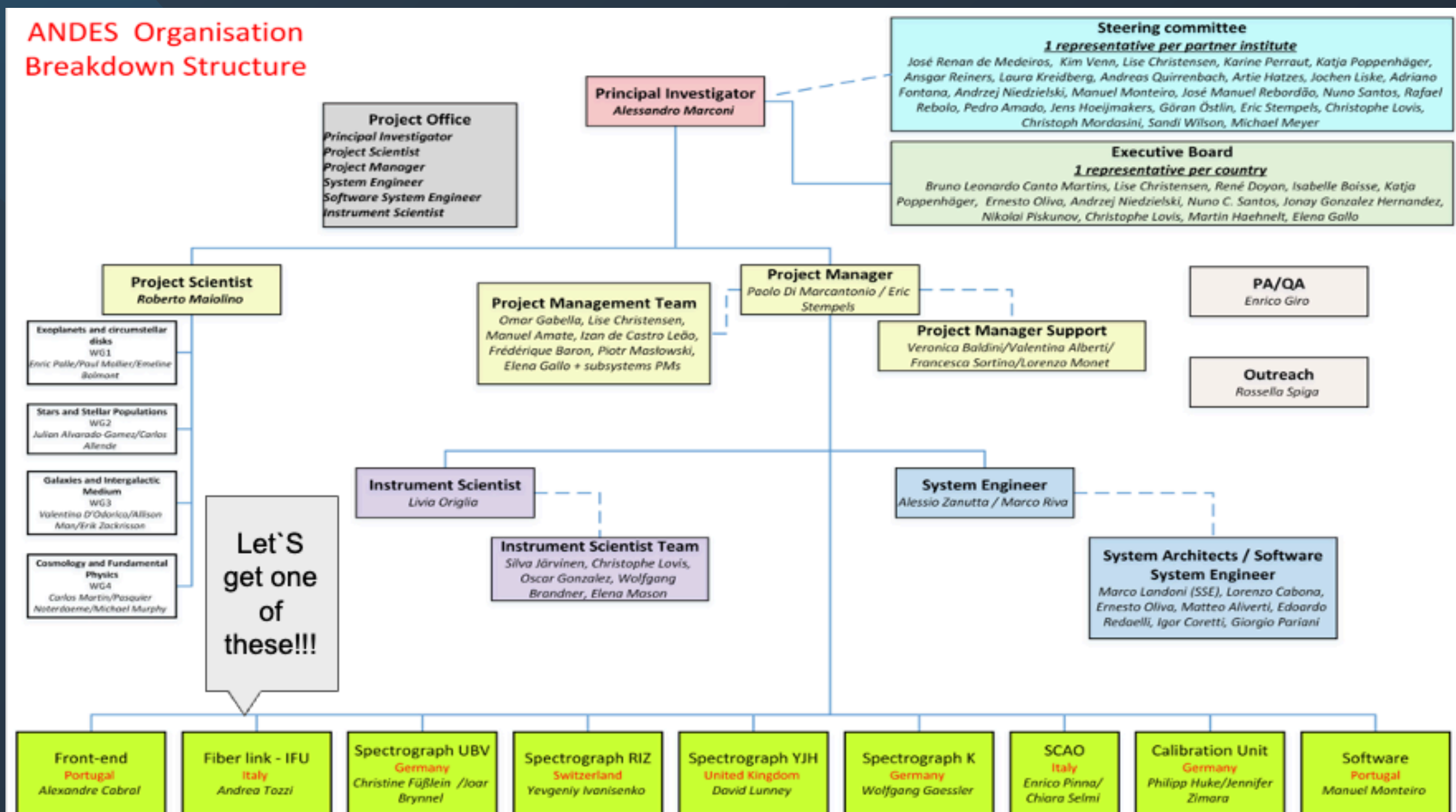
**Fabry–Pérot Optics for Calibration in the UV Spectrum -
*High-Resolution Etalon Technology for Future Space Missions***

the FOCUS team: CZ, AT, BE

- i) Essential technology for future (e.g. WHO observatory)
- ii) Wide scientific application - perfect for CZ community (spectroscopy)
- iii) Leadership in development phase (collaboration with experience partners) → leadership/need in deployment and key participation

CZ-ANDES consortium stepping into high-res spectroscopy

CZ Responsibility over one full unit



Software for Astro- applications at SCI MUNI

Close collaboration with Uni Vienna

From instrument pipelines to onboard software

*Aiming to build a software group and new
expertise with training support from abroad*

*We are very much open to collaborators, potential
new team members - happy to chat!*



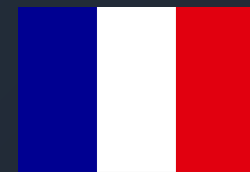
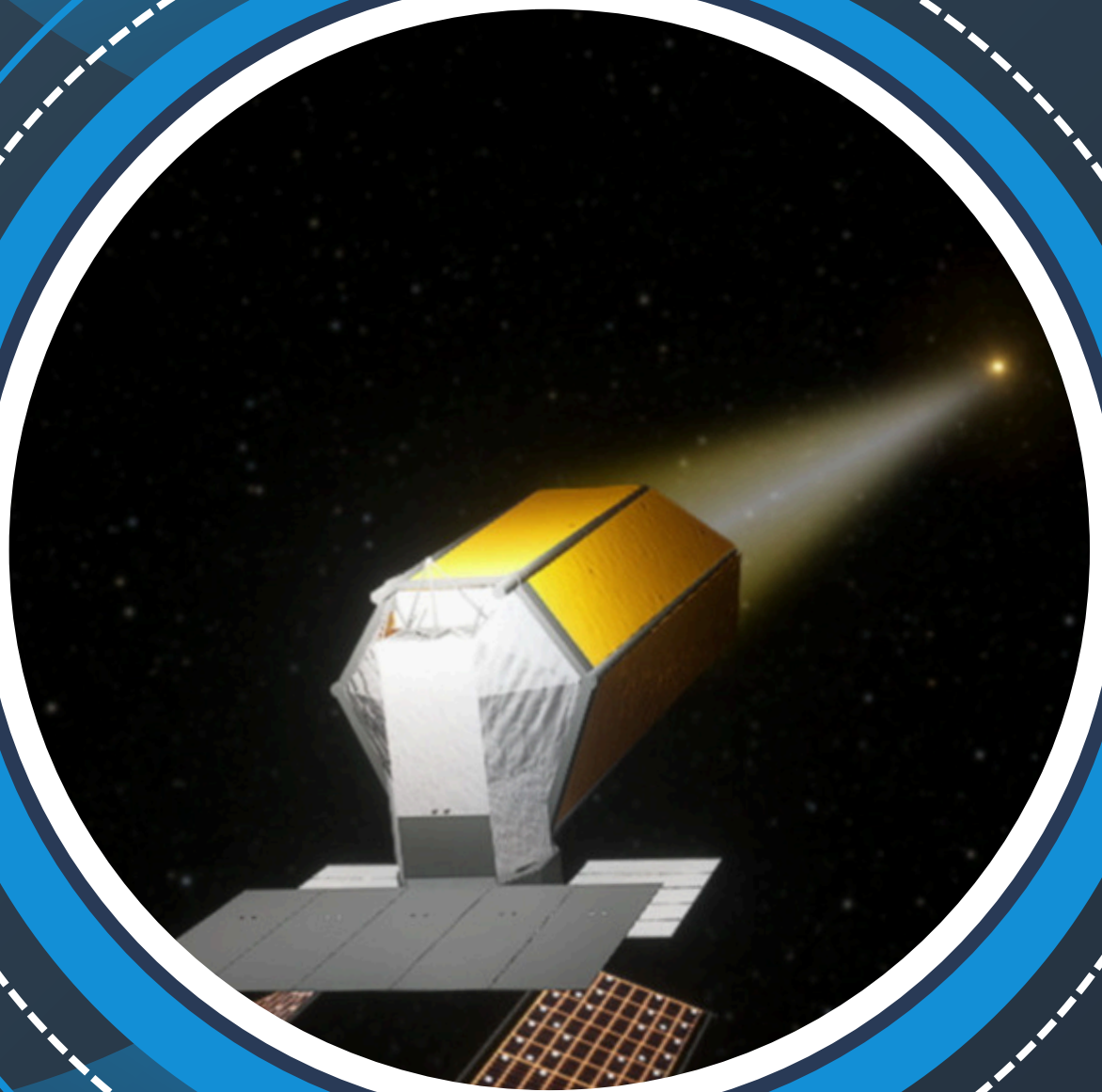
Building Czech Expertise in High-Resolution UV Spectroscopy for Future Space Missions

From participation to ownership of key space capabilities.

Interested (industry) collab:
software/hardware programming
optics/mechanical engineering

Happy to connect!

tereza.jerabkova@sci.muni.cz



Pollux

MUNI